

BERKSHIRE COMMUNITY COLLEGE

2022–2027 Strategic Plan

EQUITY-CENTERED • EQUITY-ACTIONED

VISION

Berkshire Community College will provide equitable, accessible and transformative learning opportunities focused on the current and evolving needs of our diverse community.

MISSION

Berkshire Community College is committed to providing an exceptional education and a wide range of opportunities that meet the diverse needs of our community through college transfer, workforce and career pathways, partnerships and lifelong learning.

VALUES

Student-Centered – Diversity & Inclusion – Purpose Driven – Responsiveness – Sustainability



GOAL I: EQUITABLE STUDENT SUCCESS

OBJECTIVES:

- Foster individual student growth and development.
- Increase access to educational opportunities.
- Improve student outcomes, particularly for BIPOC, historically marginalized, LGBTQ, PELL eligible, and students over 23 years of age.



GOAL II: EQUITABLE TEACHING AND LEARNING

OBJECTIVES:

- Improve opportunities for student-centered teaching and learning that ensure high-quality educational outcomes.
- Promote a culture of assessment, reflection, and continued improvement.



GOAL III: EQUITABLE WORKFORCE AND COMMUNITY ENGAGEMENT

OBJECTIVES:

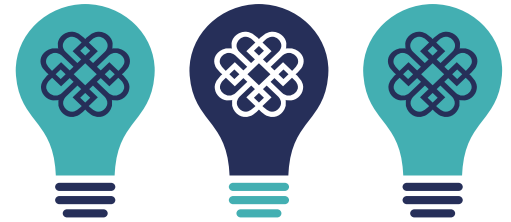
- Design academic, workforce training, and community education programs that align student, employer, and community need.
- Amplify digital skills across the student experience to reflect the needs of a future-oriented workforce and digital economy.
- Cultivate collaborative and comprehensive strategic educational and philanthropic partnerships, internally and externally.



GOAL IV: EQUITABLE INSTITUTIONAL INNOVATION AND SUSTAINABILITY

OBJECTIVES:

- Ensure ongoing financial stability of the College.
- Modernize College campus infrastructure and operations.
- Align advancement initiatives to diversify funding opportunities.
- Diversify the College workplace and promote a culture of belonging.
- Grow and diversify enrollment.
- Elevate Campus-wide Institutional Environmental Sustainability



MOVING TO STRATEGIC DOING

- Comprehensive student support
- Digital skills & career readiness in curriculum
- Promotion of student learning outcomes that are equity focused across all disciplines
- Consistent & transparent assessment process of all outcomes
- Standardize and organize IT infrastructure with data governance



MARTHA ESCOBAR '22 PSYCHOLOGY, 29 WHO SHINE WINNER

“BCC was close and convenient for me as a mom with a young daughter, and as an ESOL student who was nervous to start college for the first time. I received so much help and support from tutors, TRIO and my professors. I learned and grew not only academically, but as a person.”

